

# Cheetahs

Non-Fiction Text Features



# Cheetahs

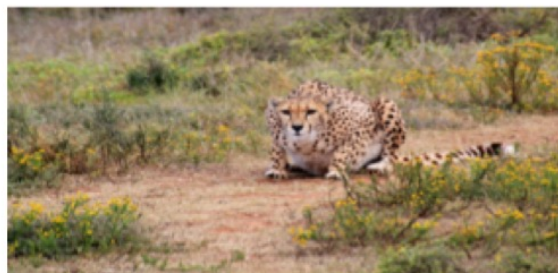
Think you could outrace a cheetah?

Think again! Cheetahs are the fastest land animal in the world. They can run up to 70 mph, which is the speed limit on many highways! Cheetahs are **carnivores** and use their speed to catch their prey.

Even though cheetahs can run fast, they don't like to run for very long. A cheetah will get very close to its prey before starting to run. The cheetah will stay low and **camouflage** in tall grasses. Then, it will **accelerate** very quickly and catch its meal by surprise.

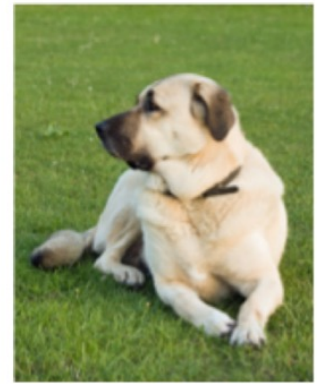
Cheetahs are **diurnal** animals, which means they are mostly active during the day. Unlike other large cats, like the lion and the jaguar, Cheetahs have very poor night vision. This means they must hunt their prey when it is light outside. The dark tear marks under their eyes help reflect sunlight while it hunts. Cheetahs prefer to hunt at **dawn** and **dusk**. Gazelles, impalas, rabbits and antelopes are all food for the cheetah.

There are not many cheetahs left in the world. Much of their habitat has been taken over by humans to build roads, **settlements** and **ranches**. Many ranchers kill cheetahs to protect their **livestock**. Scientists are working together to find ways to protect the cheetah and save it from **extinction**.



Did you know?

Ranch owners in the country of Namibia are using Anatolian Shepherd dogs to help protect cheetahs. These dogs scare away cheetahs so ranchers do not have to kill them to protect their livestock.



Anatolian Shepherd dog



Namibia

This cheetah is getting ready to use its powerful legs to chase its prey.

# Glossary

accelerate- to speed up

camouflage- blend in with surroundings

carnivores- animals that eat other animals

dawn- the time in the morning when the sun is coming up

diurnal- active during the day

dusk- the time in the evening when the sun is setting

extinction- when a species has no living members

livestock- farm animals that are raised and used by humans

ranches- a large farm where cattle or other animals are raised

settlements—a place where people establish a community

Name \_\_\_\_\_

Date \_\_\_\_\_

## Think About It

1. Name two text features used in this article. Explain how each text feature helped you better understand the article.

---

---

---

---

---

---

---

---

---

---

2. The article states that cheetahs are in danger of becoming extinct. Explain.

---

---

---



---

---

Name \_\_\_\_\_

Date \_\_\_\_\_

Use the spaces below to explain what each text feature is and how it helps you understand the article.

 <p>photograph</p>	
<p>map</p>	
<p>Glossary</p> <p>accelerate- to speed up camouflage- blend in with surroundings carnivores- animals that eat other animals</p> <p>glossary</p>	
<p>are diurnal animals,</p> <p>bold print</p>	
 <p>label</p>	

\*Bonus\* Name another text feature used in this article.  
How does it help you understand the article?

---

---

---

---

Fonts provided by



**Thank you for  
purchasing!**

